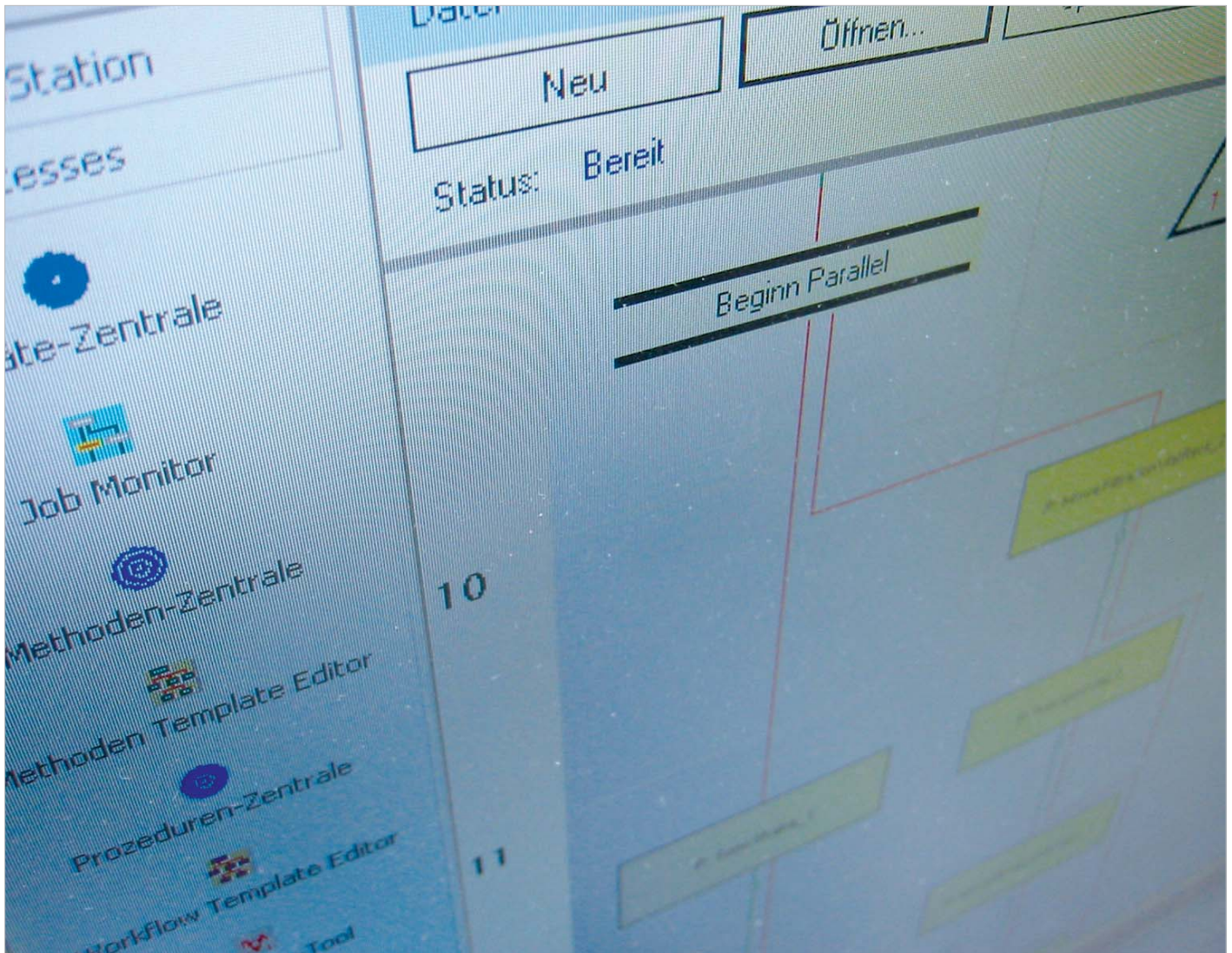


Workflow Manager – Your Lab Control

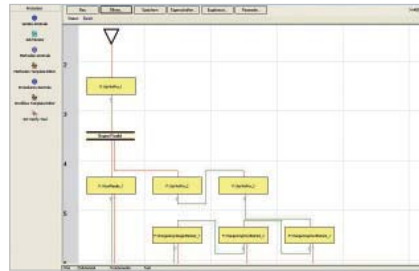
Seamless data flow between instruments and LIMS



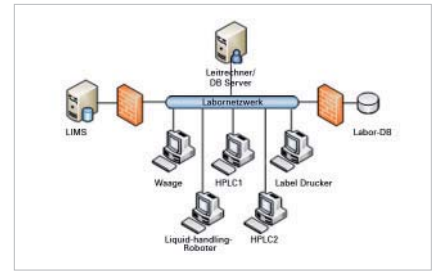
- Integration of laboratory instruments into process control
- Flexible definition of laboratory workflows
- Uninterrupted logging of sample and process data
- Higher sample throughput by optimally using existing capacities



Status Monitor showing sample positions and instrument status



Easy input of laboratory workflows with conditional branching



Chromatography Lab

FUNCTIONS

- Control of any laboratory devices and instruments
- Control and management of workstations
- Control and management of complex robotic systems
- Data link to ERP, LIMS, and custom databases
- Import and export of data via MS Excel and text files
- Graphical programming of workflows and methods via drag&drop
- Dynamic representation of sample and process data in the GUI
- Protected database, audit trails, and user management for GxP compliant laboratories

ADVANTAGES

- High Flexibility through free definition and programming of various laboratory workflows and production processes
- Simultaneous processing of multiple individual workflows
- Integration of instruments from various application areas
- User guidance for efficient and easy execution of manual worksteps
- Data security by automated transfer of data to protected databases
- Exclusion of human errors

Application Areas

Control of multiple laboratory workflows in:

- Sample preparation and analytics
- HPLC purification
- Compound management and logistics

Benefits

- Minimization of manual effort by guided execution of routine workflows
- Increase in efficiency by automated data flow between LIMS/ERP and laboratory instruments
- Security of sample and process data (21 CFR Part 11 compliant)
- Independency from existing methods and workflows